

# NZSO Scoring & Recording

The New Zealand Symphony Orchestra recording legacy spans over 75 years, starting as New Zealand Broadcast Corporation's national orchestra and evolving into the internationally recognised touring, studio and broadcast orchestra we are today.

The NZSO is an active and sought-after partner in recording projects of all sizes, with the [IMDB](#) profile and accolades to prove it. In 2016 the NZSO was nominated for a Grammy Award for Best Orchestral Performance, and has has received many nominations and wins at the Aotearoa Music Awards.

Notable scoring projects include *A Minecraft Movie*, *Saving Bikini Bottom: The Sandy Cheeks Movie*, *Wish Dragon*, *The Hobbit*, *The Lovely Bones*, *Escape Plan*, *Mortal Engines*, and *Titanfall 2*.

The NZSO is also a proud supporter of Aotearoa New Zealand's artists through pathways such as the Todd Young Composers Award, NYO Composer-in-Residence, SOUNZ Composer Sessions, and the NZSO Recording Aotearoa programme.

## Recording Venues

In our resident city of Wellington, the NZSO currently records in the following venues:



NZSO in session with Gemma New for Adam Schoenberg at Michael Fowler Centre



NZSO audio branding project for commercial client at Massey Studios



NZSO produced audio and film project at Stella Maris

### Michael Fowler Centre

One of New Zealand's premier concert halls, the Michael Fowler Centre has an excellent natural acoustic and spacious stage. We have a full resident symphonic set-up in the building and can comfortably cater over 100 players.

Example of recent NZSO film score recorded here: [A Minecraft Movie](#).

### Massey Studios Live Room

Located in the Toi Rauwhārangī College of Creative Arts, Massey Studio's Live Room is ideal for small to medium ensembles of up to 45 players (slightly more if utilising isolation booths), or for scores sectioned and multi-tracked.

Example of recent NZSO film score recorded here: [Saving Bikini Bottom](#).

### Stella Maris, Park Road Post

Supplementing the renowned Miramar site, Stella Maris also houses additional mixing facilities and studios. Ideal for small ensembles and string groups up to 30 players, or scores sectioned and multi-tracked.

Example of recent NZSO work recorded here: [Hansel and Gretel](#).



## Further Info & Testimonials

For more information, visit [NZSO Recording](#), and read testimonials for our work in:

- [Scoring for Screen](#)
- [Commercial Recording](#)
- [NZSO Recording Aotearoa](#)



Hamish McKeich, NZSO Principal Conductor in Residence





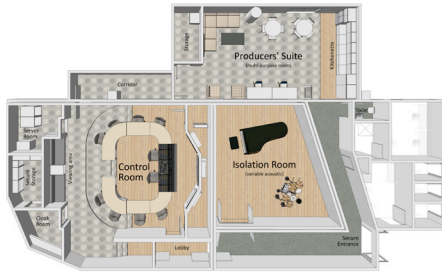
Rendering of Wellington Town Hall, opening Feb 2027



Recording session with Adam Schoenberg



LAWO MC2 96 - Grand Production Console



Floorplan of NZSO's studio complex in Wellington Town Hall

## NZSO Availability

The NZSO is a full-time touring symphony orchestra of 90 players, however our schedule allows for regular commercial hire engagements of varying sizes:

- For large projects (4+ days), we require four or more months to work into our schedule,
- For smaller projects (2-3 days), we can usually accommodate with 10 or more weeks lead time, and
- For a single day engagement, we can usually accommodate within 6-8 weeks

Bookings are open for 2025 and 2026 around NZSO season engagements, and pencil options are available for 2027 and beyond. We look forward to working with you!

## For Enquiries, Quotes & Project Consultancy

Please contact Claire Wackrow, Consultant: Recordings and Commercial Ventures, by email on: [clairew@nzso.co.nz](mailto:clairew@nzso.co.nz).

## New Recording Studio Opening in Feb 2027

The NZSO is excited to soon be opening a new recording studio in the refurbished Wellington Town Hall, "*the home of the NZSO*". The studio comprises a Control Room, Isolation Room, Producers' Suite and all the facilities and technology required for complex recording projects.

The studio will have the ability to record from various spaces within the Town Hall, including the Adam Auditorium, the Lloyd Morrison Theatre and the Concert Chamber, providing optimal flexibility for large and small projects or remote recording sessions.

The central Control Room is designed to comfortably accommodate large teams and includes a generous recording area, secure entrance lobby and a raised producers' area overlooking the console and three large picture monitors.

The Isolation Room has tuneable panels allowing variable acoustic conditions from very dry to live, to suit the needs of any project. The Isolation Room houses NZSO's Model D Steinway Piano and is suitable for recording individuals, groups, bands or small ensembles.

The Producers' Suite is a multi-purpose flexible space that can be configured as needed, including a lounge area, office desking, catering, or for additional monitoring or engineering.

NZSO's Studio Technical Overview: LAWO MC2 96 and MC2 56 Grand Production Consoles powered by 2 x UHD Cores providing 768 x 2 DSP channels, ATC 7.1.4 monitoring, 3 x Pro Tools Ultimate on Mac Pros, Integrated control system incorporating comms, vision control, lighting control, signage, Pro Tools timers, and recording status. Microphone stock of 100+ units, including AEA, Beyer, Coles, DPA, Neumann, Rode, Royer, Sanken, Schoeps, Sennheiser and Shure.



Rendering of NZSO's studio Control Room